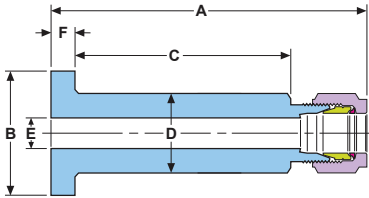


## Lapped Flange Connector



Flange Seal A



Smooth

Flange Seal B



Serrated / Concentric

### Lapped Flange Connector: CLF (Fractional)

Part Number	T		Dimensions — inches						Finish
	Tube O.D.	Flange Seal	A	B	C	D	E min.	F	
4CLFA [ ]	1/4	A	3.33	1.38	2.28	.88	.19	.25	3.2 – 6.3 Micrometer (Ra)
4CLFB [ ]	1/4	B	3.33	1.38	2.28	.88	.19	.25	6.3 – 12.5 Micrometer (Ra)
6CLFA [ ]	3/8	A	3.34	1.38	2.28	.88	.30	.25	3.2 – 6.3 Micrometer (Ra)
6CLFB [ ]	3/8	B	3.34	1.38	2.28	.88	.30	.25	6.3 – 12.5 Micrometer (Ra)
8CLFA [ ]	1/2	A	3.47	1.38	2.28	.88	.42	.25	3.2 – 6.3 Micrometer (Ra)
8CLFB [ ]	1/2	B	3.47	1.38	2.28	.88	.42	.25	6.3 – 12.5 Micrometer (Ra)

### Lapped Flange Connector: CLF/MM (Metric)

Part Number	T		Dimensions — mm						Finish
	Tube O.D.	Flange Seal	A	B	C	D	E min.	F	
10CLFA [ ]MM	10	A	84.1	34.9	57.9	22.2	7.1	6.4	3.2–6.3 Micrometer (Ra)
10CLFB [ ]MM	10	B	84.1	34.9	57.9	22.2	7.1	6.4	6.3–12.5 Micrometer (Ra)

The Lapped Flange Connector is used to allow safe and easy connections between process lines and instruments. The basic, one-piece unit consists of a HOKE Gyrolok tube connection end and a 1/2" lap joint pipe flange. The flange end is dimensioned to meet "ANSI 2500" flange specifications. Available in "Smooth" or "Serrated/Concentric" seal faces, and in 316 Stainless Steel or Monel.